



Highway Bar Kit #6099-0027

Parts List

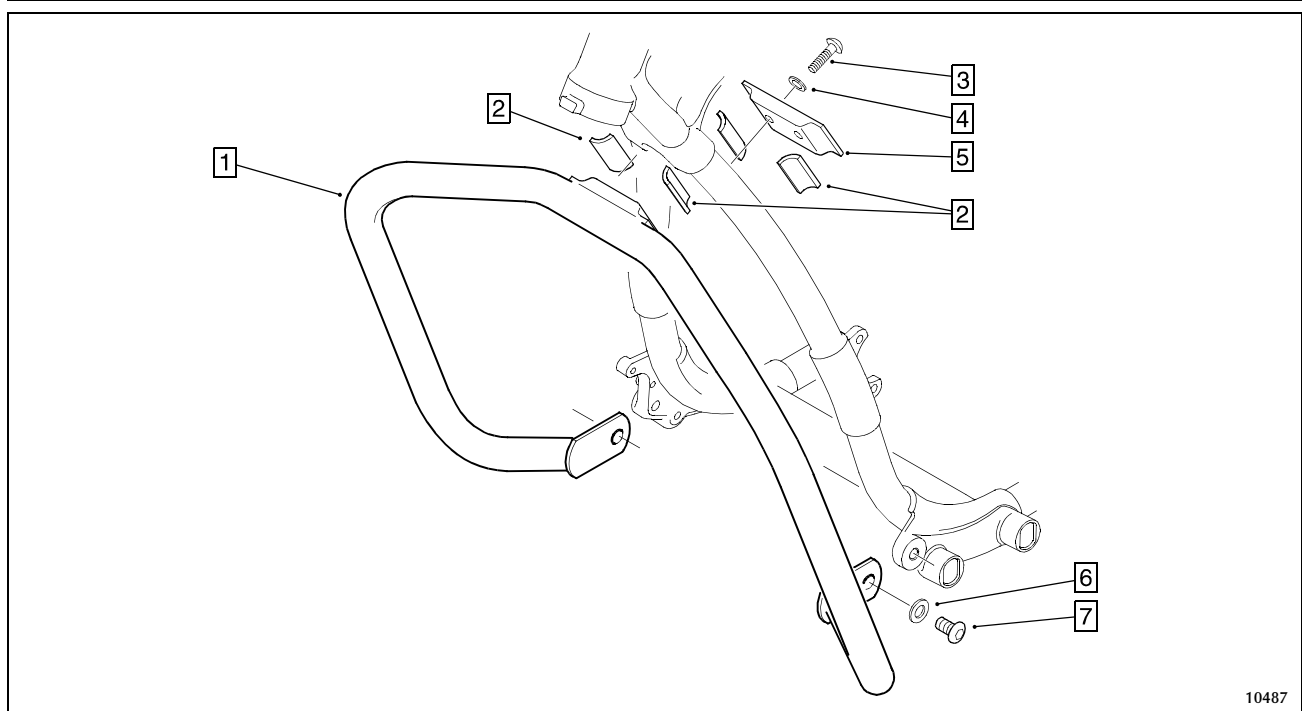


Figure 1

Item	Part No.	Description	Qty.	Item	Part No.	Description	Qty.
1.		Highway Bar*	1	5.	7399-0013	Bracket - Bar	1
2.	7399-0012	Pad - Friction (bulk)	1	6.	5299-0042	Washer	2
3.	5199-0633	Screw - Hex. Button Hd.	2	7.	5199-0466	Screw - Hex. Button Hd.	2
4.	5299-0058	Washer	2				

* Not Sold Separately

Installation Instructions

Please read the Safety information on the following page before using your highway bar.

NOTICE

The working clearance between the front fender and the motorcycle frame is small, be careful not to damage painted or plated surfaced during installation or removal.

1. Cut the friction pad provided with this kit into four equal pieces (1-1/2" x 1-1/4" each). Remove the adhesive backing and attach two pieces to the highway bar bracket, and two pieces to the highway bar (see Figure 1).

2. Place the highway bar between the motorcycle frame and the front fender. Align the lower mounting tabs of the highway bar with the mounting holes on the motorcycle frame and

Highway Bar Kit #6099-0027

install one washer and button hd. screw on each side finger tight (see Figure 1).

3. Raise the top of the highway bar until the friction pads contact the motorcycle frame

squarely. Use the remaining washer and button hd. screw to install the bar bracket (see Figure 1).

Torque: 17 ft. lbs.

4. Tighten both lower mounting screws.

Torque: 45 ft. lbs.

Safety

WARNING

This highway bar will not protect you from injury.

WARNING

Adding accessories and additional weight to the motorcycle can affect its stability, handling characteristics, and safe operating speed.

Be sure that the highway bar is securely attached to the motorcycle before riding and whenever you take a break while riding. If the highway bar shifts while you are riding, it can create a sudden imbalance that can cause you to lose control.

To maintain stability and balance:

- With the exception of highway pegs, do not attach additional weight to the highway bar.



EXCELSIOR-HENDERSON MOTORCYCLE MANUFACTURING COMPANY

805 HANLON DRIVE · BELLE PLAINE, MINNESOTA 56011 · TELE: 612.873.7000/FAX: 612.873.7030 · www.excelsior-henderson.com

Excelsior-Henderson™, Super X™, Rider's Handbook™, and the X & Bar logo are registered trademarks of the Excelsior-Henderson Motorcycle Manufacturing Company. Loctite® is a registered trademark of the Loctite Corporation. Always ride safely, within the limits of the law, and your riding ability. Never ride under the influence of alcohol or drugs. Know your Excelsior-Henderson motorcycle and read your Rider's Handbook from cover to cover. We recommend you take a Motorcycle Safety Foundation Rider Education Course (for a course near you call 1.800.447.4700). We also recommend that you always wear a helmet, appropriate protective eyewear, and appropriate clothing, and that you insist your passenger does the same. However, we respect your right as an individual to make your own choice about the protective equipment you wear (within the limits of the law). Protect your privilege to ride by joining the American Motorcyclist Association.