



# ACCESSORY HANDBOOK

## Saddlebag Kit #6099-0019

### Parts List

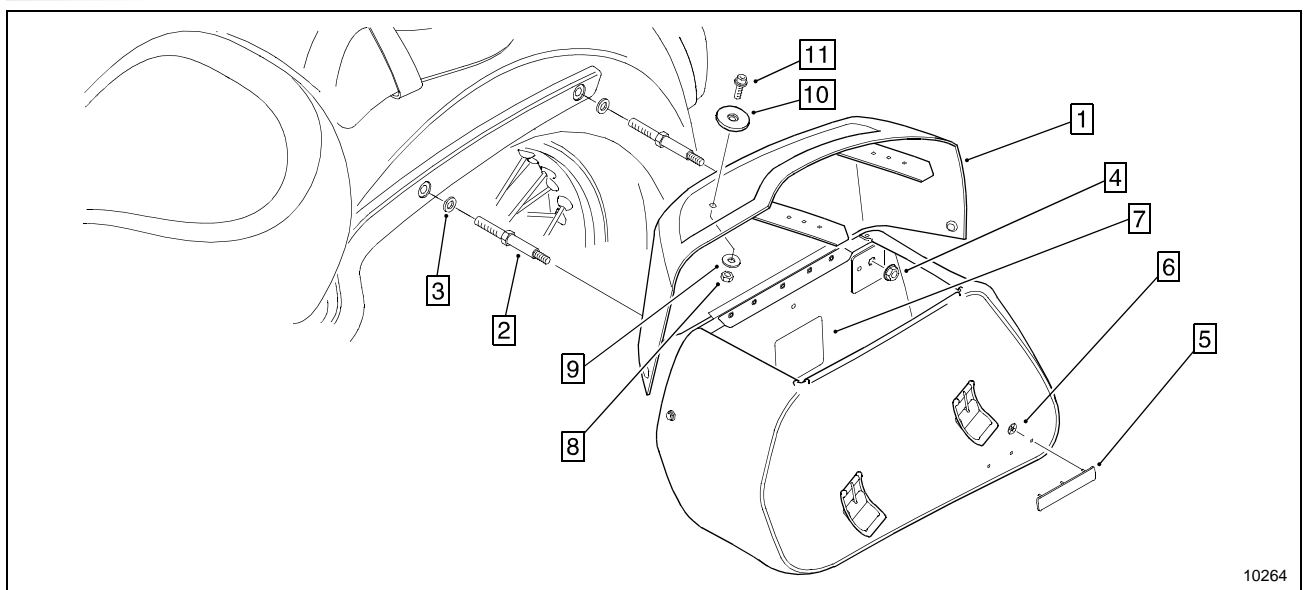


Figure 1

Item	Part No.	Description	Qty.	Item	Part No.	Description	Qty.
1.	7199-0001	Saddlebag Assembly - LH	1	6.	7199-0005	Nut - Push	6
*	7199-0002	Saddlebag Assembly - RH	1	7.	7199-0006	Decal - Warning	2
2.	7199-0003	Stud - Mounting	4	8.	5199-0494	Nut - Hex.	2
3.	5299-0106	Washer	4	9.	5299-0035	Washer - Flat	2
4.	5199-0495	Nut - Flange	4	10.	7499-0018	Side Reflector	2
5.	7199-0004	Plate - Logo	2	11.	5199-0598	Screw - Hex. Socket Hd.	2

\*Not Illustrated

### Installation Instructions

Please read the Safety information on page 2 of this document before using your saddlebags.

#### NOTICE

To prevent the rear fender from any unnecessary movement that could damage its painted surface, completely install or remove one saddlebag at a time.

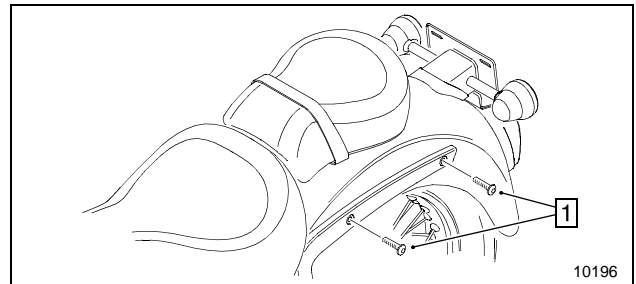


Figure 2

1. Mounting Screws (existing)

## Saddlebag Kit #6099-0019

1. Remove the existing rear fender mounting screws (see Figure 2).

2. Apply a few drops of Loctite® 242 thread locker to the larger threads of the saddlebag mounting studs. Install the mounting studs and plain washers as shown (see Figure 1).

Torque: 35 ft. lbs.

3. Slide the saddlebag assembly onto the mounting studs. Install the flange lock nuts as shown (see Figure 1).

Torque: 20 ft. lbs

4. Repeat this procedure for the opposite saddlebag.

5. Punch or drill a small hole in the side flap of each lid and install the side reflectors provided with the kit (see Figure 1).

## Safety

### WARNING

Adding accessories and additional weight to the motorcycle can affect its stability, handling characteristics, and safe operating speed.

Be sure that the accessories and cargo are securely attached to the motorcycle before riding and whenever you take a break while riding. Accessories or cargo that shift while you are riding can create a sudden imbalance that can cause you to lose control.

## Saddlebag Care

Natural leather has “character.” Each piece used in the construction of these saddlebags is unique, and will settle into its own distinct form over time and miles. Mature leather is “one-of-a-kind”, and if properly cared for, only gets better with age.

Caring for natural leather is similar to caring for your own skin. To prevent leather from becoming hard and dry, occasionally apply a leather conditioner. A good quality leather conditioner replaces the natural oils lost by repeated exposure to sun, wind, and rain. Leather subject to drier climates will require more frequent conditioning.

To maintain stability and balance:

- Do not exceed 15 lbs. in each saddlebag.
- Load weight equally on both sides.
- Adjust tire pressure if necessary. See Rider’s Handbook.
- Do not exceed gross axle or vehicle weight. See Rider’s Handbook and Certification Label on headstock.

To retain the beauty and character of your leather saddlebags, please follow these steps.

1. Vacuum or blow any loose dust or dirt from the saddlebag.
2. Use a good quality saddle soap and a sponge or soft cloth to clean the saddlebag. Always follow the manufacturer’s directions. Rinse the saddlebag with a clean wet cloth or sponge.
3. Once the leather is dry, treat it with a good quality leather conditioner. Always follow the manufacturer’s directions.
4. Allow the conditioner to dry, and wipe off any excess before using the saddlebag.



## EXCELSIOR-HENDERSON MOTORCYCLE MANUFACTURING COMPANY

805 HANLON DRIVE · BELLE PLAINE, MINNESOTA 56011 · TELE: 612.873.7000/FAX: 612.873.7030 · [www.excelsior-henderson.com](http://www.excelsior-henderson.com)

Excelsior-Henderson™, Super X™, Rider’s Handbook™, and the X & Bar logo are registered trademarks of the Excelsior-Henderson Motorcycle Manufacturing Company. Loctite® is a registered trademark of the Loctite Corporation. Always ride safely, within the limits of the law, and your riding ability. Never ride under the influence of alcohol or drugs. Know your Excelsior-Henderson motorcycle and read your Rider’s Handbook from cover to cover. We recommend you take a Motorcycle Safety Foundation Rider Education Course (for a course near you call 1.800.447.4700). We also recommend that you always wear a helmet, appropriate protective eyewear, and appropriate clothing, and that you insist your passenger does the same. However, we respect your right as an individual to make your own choice about the protective equipment you wear (within the limits of the law). Protect your privilege to ride by joining the American Motorcyclist Association.