



Short-Cut Exhaust Pipes Kit #6099-0021

Parts List

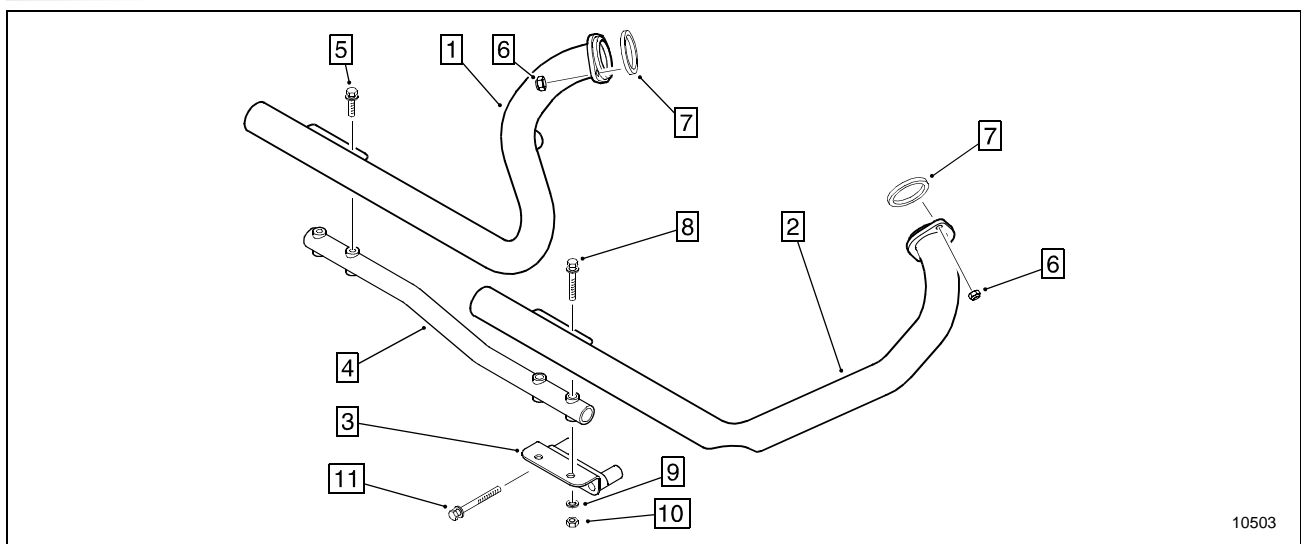


Figure 1

Item	Part No.	Description	Qty.	Item	Part No.	Description	Qty.
1.		Short-Cut Pipe - Rear*	1	7.	3199-0029	Gasket - Exhaust	2
2.		Short-Cut Pipe - Front*	1	8.	5199-0024	5/16-18 x 1-3/4 Hex. Hd. Screw	2
3.	7399-0014	Bracket - Front	1	9.	5299-0058	Washer - Flat	2
4.	7399-0018	Bracket - Rear	1	10.	5199-0508	5/16-18 Nut - Hex	2
5.	5199-0021	5/16-18 x 1 Hex. Hd. Screw	2	11.	5199-0102	3/8-16 x 2-1/4 Hex. Hd. Screw	2
6.	5199-0530	5/16-24 Nut - Hex	4				

* Not Sold Separately

Installation Instructions

NOTICE

These exhaust pipes do not conform to EPA noise emissions regulations and are intended for closed course use only.

⚠ WARNING

Under normal operating conditions, exhaust system components can be extremely hot. Allow engine to cool before installing the Short-Cut pipes.

1. Remove all of the existing exhaust system heat shields (see Figure 2).
2. Loosen both muffler clamps and slide them forward off of the existing mufflers.
3. Remove and discard the muffler mounting screws, then slide the mufflers and the muffler clamps off of the header pipes.
4. Disconnect the oxygen sensor wire from the rear header pipe.

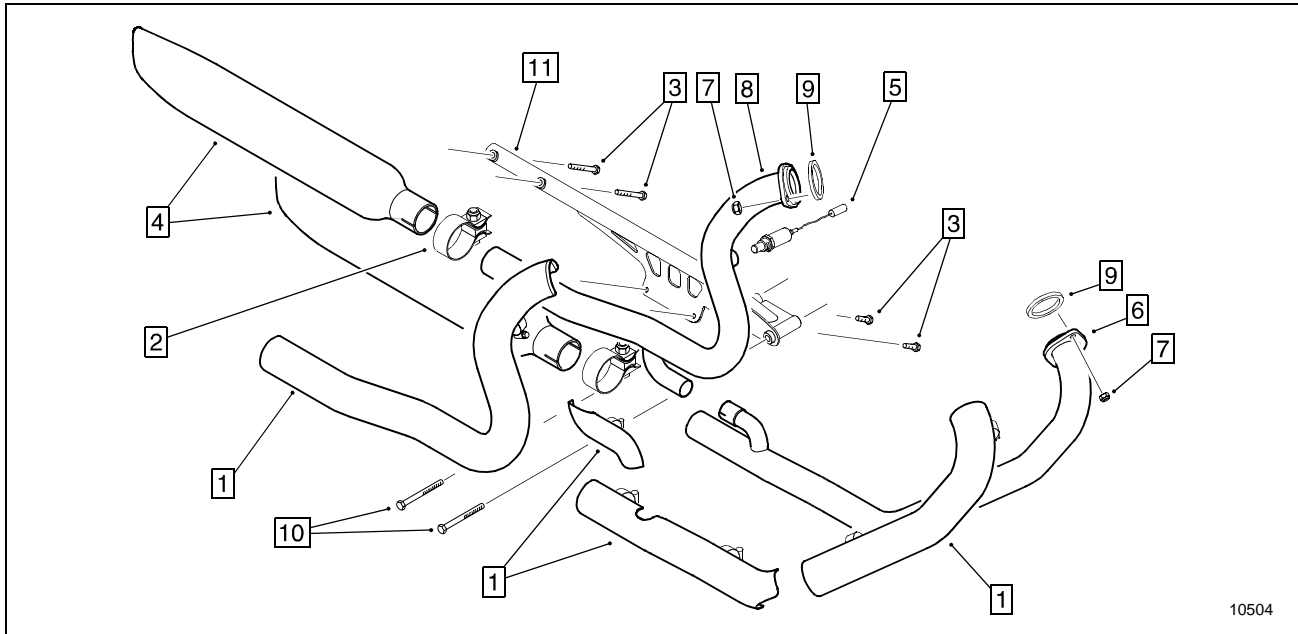


Figure 2

- | | |
|--------------------------------|-----------------------------|
| 1. Exhaust System Heat Shields | 7. Header Mounting Nuts |
| 2. Muffler Clamps | 8. Rear Header Pipe |
| 3. Muffler Mounting Screws | 9. Exhaust Header Gaskets |
| 4. Mufflers | 10. Mounting Bracket Screws |
| 5. Oxygen Sensor | 11. Mounting Bracket |
| 6. Front Header Pipe | |

10504

5. Remove the front header mounting nuts and slide the front header pipe forward, out from the motorcycle.

6. Remove the rear header mounting nuts and the rear header pipe.

7. Remove the oxygen sensor from the rear header pipe, and remove both exhaust header gaskets.

8. Remove the stock exhaust system mounting bracket screws and the mounting bracket.

9. Install the new exhaust header gaskets provided with this kit into the exhaust ports of each cylinder head.

10. Install the front mounting bracket to the engine with the two 3/8-16 x 2-1/4 hex. hd. screws provided with this kit.

Torque: 30 ft-lbs.

11. Slide the front short-cut pipe into position on the front cylinder head and loosely install two of the new header mounting nuts.

12. Loosely attach the front short-cut pipe to the front and rear mounting brackets (see Figure 3).

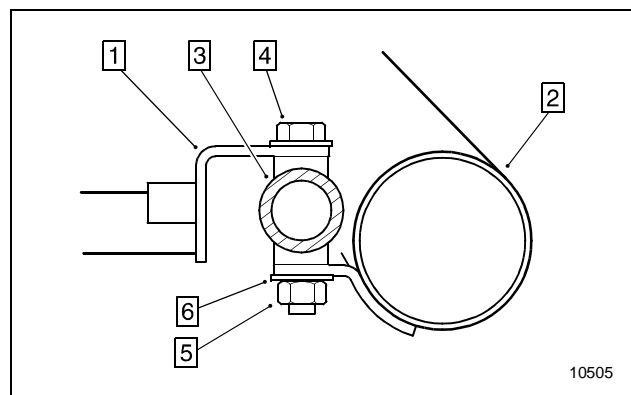


Figure 3

- | |
|---------------------------------------|
| 1. Front Mounting Bracket |
| 2. Front Short-Cut Pipe |
| 3. Rear Mounting Bracket |
| 4. 5/16-18 x 1-3/4 Hex. Hd. screw (2) |
| 5. 5/16-18 Hex. Nut (2) |
| 6. Washer - Flat (2) |

10505

Short-Cut Exhaust Pipes Kit #6099-0021

13. Reinstall the oxygen sensor into the rear short-cut pipe.

Torque: 20 ft-lbs.

14. Slide the Rear short-cut pipe into position and loosely install two of the new header mounting nuts.

15. Attach the rear short-cut pipe above the rear mounting bracket (see Figure 4).

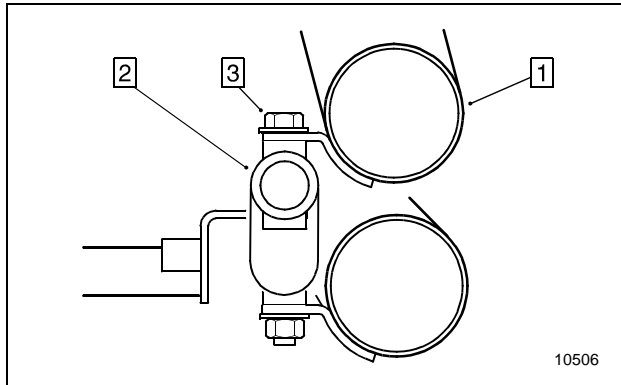


Figure 4

1. Rear Short-Cut Pipe
2. Rear Mounting Bracket
3. 5/16-18 x 1 Hex. Hd. Screw (2)

16. Reconnect the oxygen sensor wire to the rear header pipe.

17. Working from front to rear, tighten all exhaust system fasteners as follows:

- Front header mounting nuts
Torque: 20 ft. lbs
- Rear header mounting nuts
Torque: 20 ft. lbs
- Front pipe mounting bracket screws and nuts
Torque: 30 ft. lbs
- Rear pipe mounting bracket screws
Torque: 30 ft. lbs

18. Thoroughly clean both short-cut pipes with window cleaner or chrome polish before starting the motorcycle.

NOTICE

Oil, grease, and fingerprints can permanently damage chrome plated finishes when heated to extreme temperatures.



EXCELSIOR-HENDERSON MOTORCYCLE MANUFACTURING COMPANY

805 HANLON DRIVE · BELLE PLAINE, MINNESOTA 56011 · TELE: 612.873.7000/FAX: 612.873.7030 · www.excelsior-henderson.com

Excelsior-Henderson™, Super X™, Rider's Handbook™, and the X & Bar logo are registered trademarks of the Excelsior-Henderson Motorcycle Manufacturing Company. Loctite® is a registered trademark of the Loctite Corporation. Always ride safely, within the limits of the law, and your riding ability. Never ride under the influence of alcohol or drugs. Know your Excelsior-Henderson motorcycle and read your Rider's Handbook from cover to cover. We recommend you take a Motorcycle Safety Foundation Rider Education Course (for a course near you call 1.800.447.4700). We also recommend that you always wear a helmet, appropriate protective eyewear, and appropriate clothing, and that you insist your passenger does the same. However, we respect your right as an individual to make your own choice about the protective equipment you wear (within the limits of the law). Protect your privilege to ride by joining the American Motorcyclist Association.