



## Driving Lamp Kit #6099-0026

### Parts List

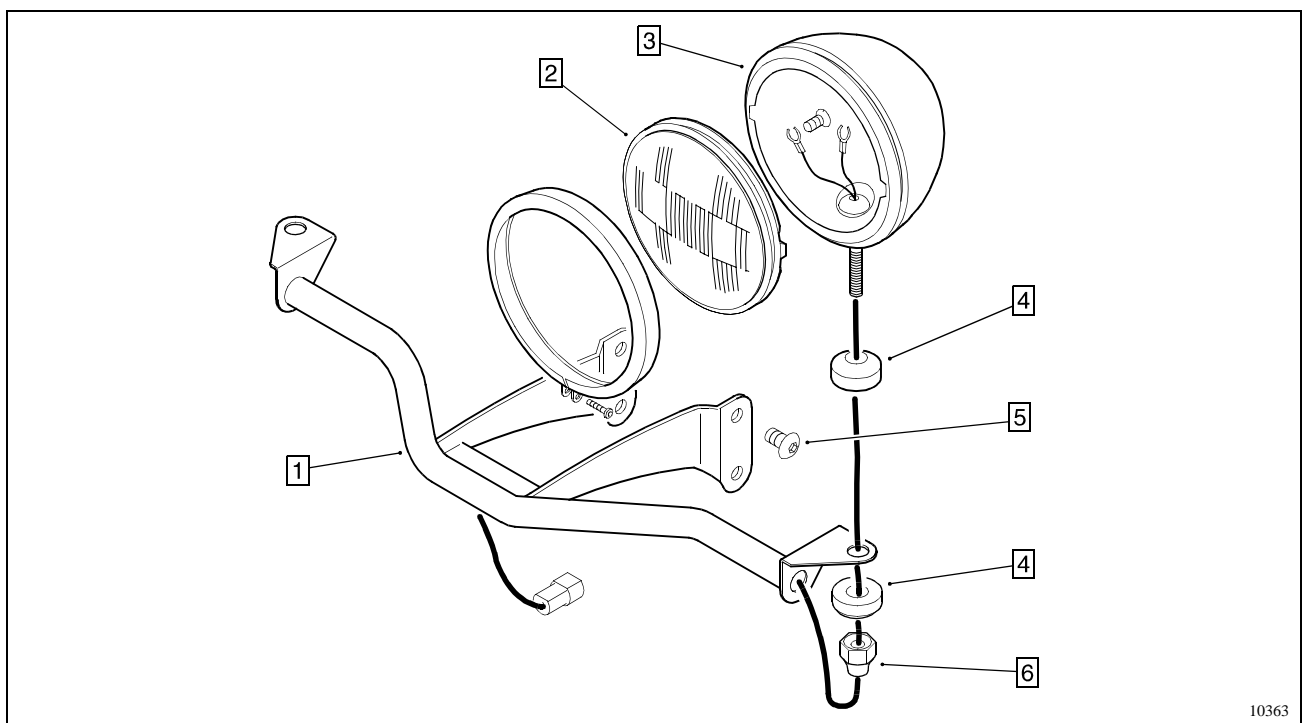


Figure 1

Item	Part No.	Description	Qty.	Item	Part No.	Description	Qty.
1.	7499-0005	Lamp Bar	1	4.	7499-0014	Spacer - Convex	4
2.	7499-0011	Bulb	2	5.	5199-0634	Screw - Hex. Button Hd.	4
3.	7499-0012	Lamp Assy. (with switch)	1	6.	7499-0016	Nut - Post	2
*	7499-0013	Lamp Assy. (without switch)	1				
		* Not illustrated					

### Installation Instructions

Please read the Safety information found on page 3 before using your driving lamps.

#### NOTICE

To connect the driving lamp to the power source provided, the fuel tank must be removed. It is not necessary to drain the fuel tank prior to removal. For easier tank removal, the fuel tank should be almost empty. The fuel tank may also be pumped empty (see the *Super X Service Handbook*).

1. Remove the hole plugs from the lower two mounting holes on each side of the rigid fork. If necessary, clean any paint from the mounting holes with a 5/16"-18 tap.

2. Attach the driving lamp bar brackets to the rigid fork with the 4 hex. button hd. screws provided as shown (see Figure 2).

Torque: 17 ft. lbs.

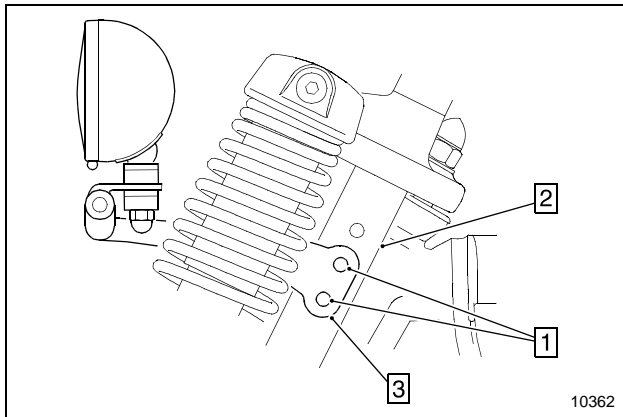


Figure 2

1. Mounting holes
2. Rigid fork
3. Bracket

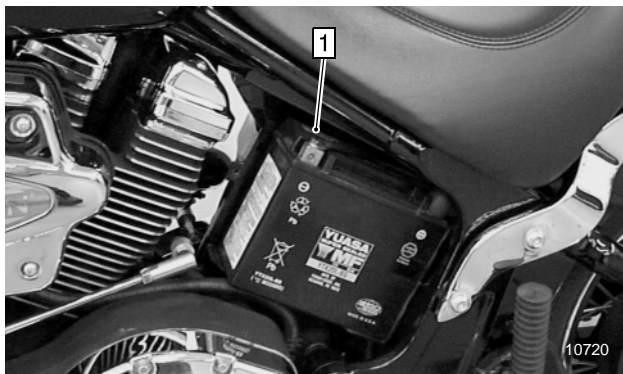


Figure 3

1. Battery negative cable
3. Remove the battery cover strap and the battery cover. Disconnect the negative cable from the battery (see Figure 3).
4. Remove the acorn bolts from the instrument pod (see Figure 4). Lift the instrument pod and disconnect the following items from the main wiring harness:
- Instrument pod
  - Fuel level sending unit
  - Fuel pump

**⚠ WARNING**

Gasoline is highly flammable and can be explosive in certain conditions. Follow safe gasoline handling practices whenever working with or near gasoline.

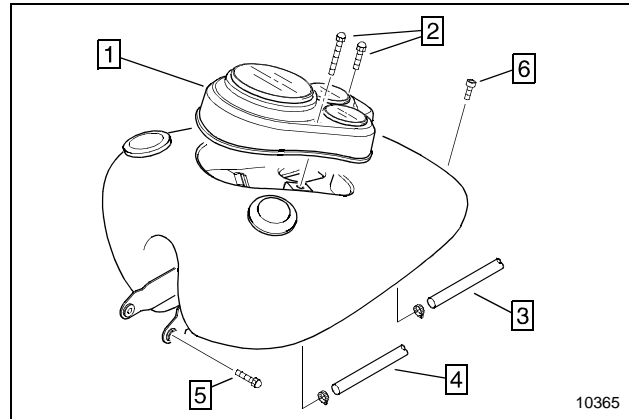


Figure 4

1. Instrument pod
2. Acorn bolts (2)
3. Vent hose
4. Fuel Hose
5. Front mounting bolts (2)
6. Rear mounting bolt

5. Disconnect the vent hose from the fuel tank. Disconnect the fuel hose at the fuel pump (see Figure 4).

**NOTICE**

Contents of the fuel tank will not drain when the fuel hose is disconnected.

6. Remove the front and rear fuel tank mounting bolts (see Figure 4). Lift the fuel tank up off of the motorcycle and move it to a safe location.
7. Route the driving lamp wires back to the main harness and connect it to the main wiring harness at connector P38 (gray). Use the wire ties provided with the kit to safely anchor the driving lamp wire.
8. Install the fuel tank by following steps 3-6 in reverse order.

9. Aim the driving lamps. Each lamp should shine straight ahead or slightly to the right of the motorcycle. The top of the lamp beam should be just below the center of the lamp at a distance of 25' (see Figure 5).

To correctly aim the driving lamps:

- Stand the motorcycle in an upright position.
- Turn the motorcycle main switch to On.
- Turn the driving lamp switch to On.
- Loosen each driving lamp post nut and aim the driving lamp beam as shown.
- Tighten each post nut and check each lamp for correct aim.

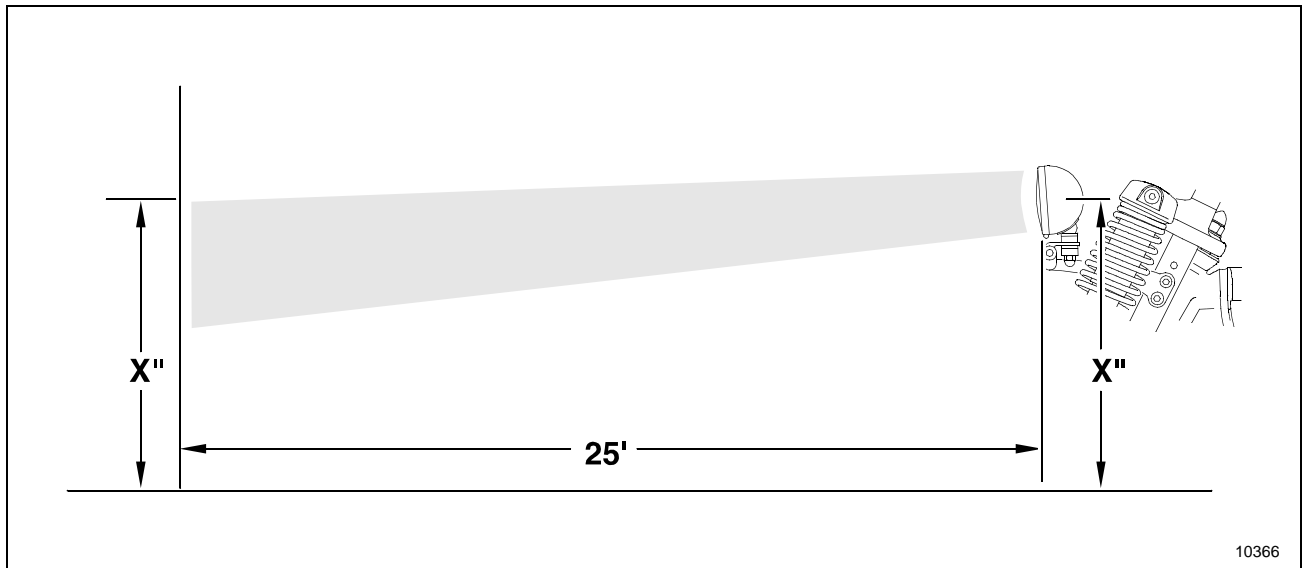


Figure 5

## Safety

### **⚠ WARNING**

Adding accessories and additional weight to the motorcycle can affect its stability, handling characteristics, and safe operating speed.

Be sure that the driving lamps are securely attached to the motorcycle before riding and

whenever you take a break while riding. If the driving lamps shift while you are riding, it can create a sudden imbalance that can cause you to lose control.

To maintain stability and balance:

- Do not attach additional weight to the driving lamps.

## Bulb Replacement

---

Before replacing either driving lamp bulb:

- The bulbs should be cool to the touch
- The driving lamp switch should be off
- The motorcycle main switch should be off

1. Loosen the driving lamp bezel screw. While supporting the bulb, gently spread the bezel and remove it from the lamp body.
2. Disconnect the bulb wires.
3. Reverse this procedure to install a new bulb.



### EXCELSIOR-HENDERSON MOTORCYCLE MANUFACTURING COMPANY

805 HANLON DRIVE · BELLE PLAINE, MINNESOTA 56011 · TELE: 612.873.7000/FAX: 612.873.7030 · [www.excelsior-henderson.com](http://www.excelsior-henderson.com)

Excelsior-Henderson™, Super X™, Rider's Handbook™, and the X & Bar logo are registered trademarks of the Excelsior-Henderson Motorcycle Manufacturing Company. Loctite® is a registered trademark of the Loctite Corporation. Always ride safely, within the limits of the law, and your riding ability. Never ride under the influence of alcohol or drugs. Know your Excelsior-Henderson motorcycle and read your Rider's Handbook from cover to cover. We recommend you take a Motorcycle Safety Foundation Rider Education Course (for a course near you call 1.800.447.4700). We also recommend that you always wear a helmet, appropriate protective eyewear, and appropriate clothing, and that you insist your passenger does the same. However, we respect your right as an individual to make your own choice about the protective equipment you wear (within the limits of the law). Protect your privilege to ride by joining the American Motorcyclist Association.